



**GIBSON STAINLESS®**  
& SPECIALTY INC

[www.gibsonstainless.com](http://www.gibsonstainless.com)

# PRODUCT BULLETIN

**NEW!**

OCTOBER 2016

## Three-Piece Couplings

Gibson Stainless has redesigned and expanded its Three-Piece Coupling product line.

Three-piece couplings are used to join and connect the threaded ends of rigid conduit where the conduit cannot be turned. Using three-piece couplings allows for future modifications to the conduit system without full disassembly.

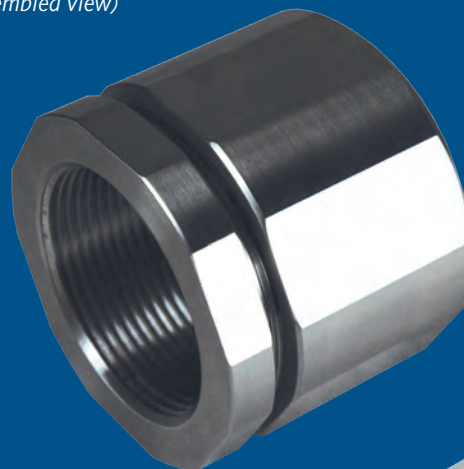
Gibson Stainless manufactures these fittings entirely in Type 316 SS. Sizes 1/2" - 2" are now offered.

**In Stock Now and Available for Immediate Shipment.**

**FOR MORE INFORMATION  
CALL 1.800.945.4316  
OR YOUR LOCAL REP**

**2" Size**

*(assembled view)*



**1/2" Size**

*(disassembled view)*



Gibson Stainless & Specialty Inc. ■ P.O. BOX 847 ■ Greensburg, PA 15601 ■ PHONE 724-838-8320 ■ FAX 724-838-1544